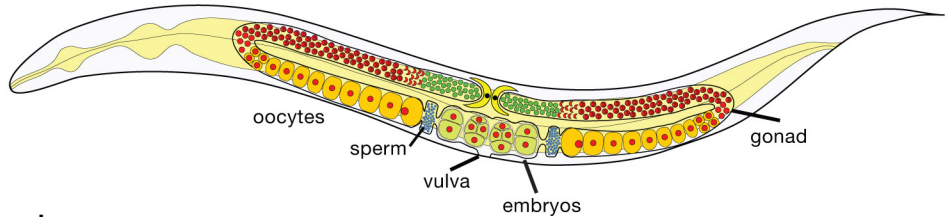
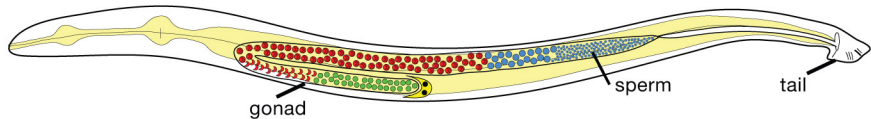


## XX hermaphrodite



## XO male



**Figure 1. *C. elegans* XX and XO Anatomy**

*C. elegans* naturally exists as two sexes, XX hermaphrodites and XO males. Hermaphrodites and males display several sex-specific anatomical features, most notably a male tail designed for mating, and a vulva on the ventral surface of hermaphrodites for reception of male sperm and for egg-laying. Their germ-line programs also differ. The two-armed gonad in hermaphrodites produces sperm initially and then oocytes throughout adulthood. The one-armed gonad in males produces sperm continuously. (Adapted with permission, from Hansen et al. 2004 [©Elsevier].)